

e.diag[®]

ULTRA SMART POWERFUL IMAGING



 **LUMIBIRD[®]**
MEDICAL

Diagnostic Platform
Dry Eye | Ocular Surface Diseases



Dry Eye | Ocular Surface Diseases



YOUR PLATFORM

ULTRA

PRECISE

HD auto focus camera integrating a unique optical module with liquid lens for fast & precise exams with an excellent image quality

TACTILE

Large HD tactile screen & joystick to simplify the exam

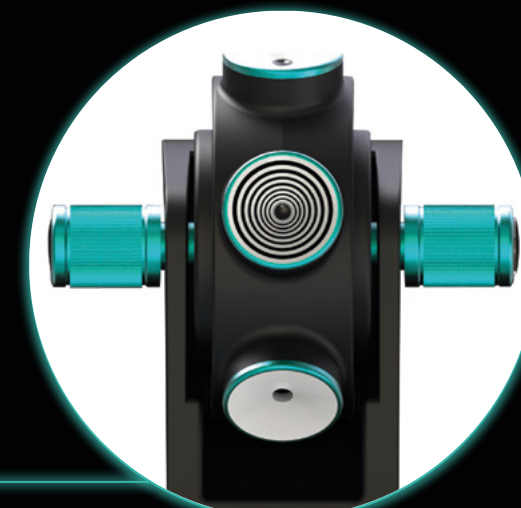
POWERFUL

- Powerful GPU card & computer
- High capacity of data management & data storage
- High performance AI algorithms
- Fast result analysis



VERSATILE

- Multiple light sources (white, infrared, blue), yellow filter & several cones to perform different dry eye exams
- Automatic exams to qualify and quantify dry eye disease
- Easily delegable



ERGONOMIC

- Rotating chinrest to fit to all face shapes
- Optimized cones to limit light reflections and shadows on the examined area
- Eyelid everter with transillumination for high quality meibography
- Comfortable light intensity for the patient
- Chinrest adaptor for children



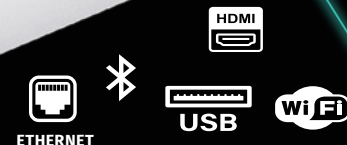
INTUITIVE

- Customizable exam protocols
- Fast exams workflow
- Automatic and accurate analysis
- One-click results report



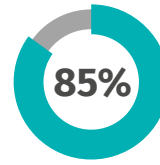
CONNECTED

DICOM
HDMI, Ethernet, USB ports
Wifi, Bluetooth
Remote service diagnostic

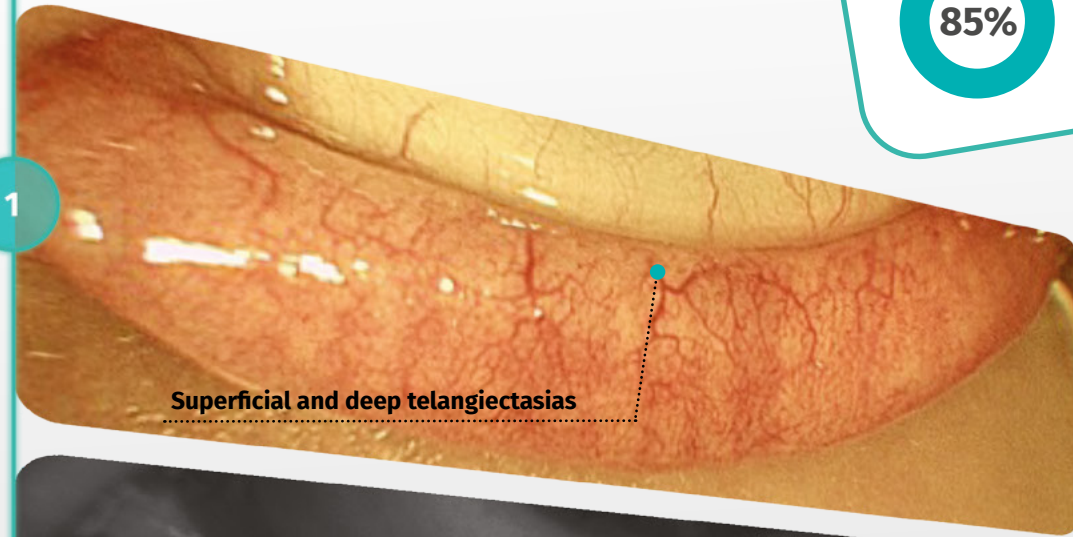


MEIBOGRAPHY

**MEIBOMIAN GLAND
DYSFUNCTION:**



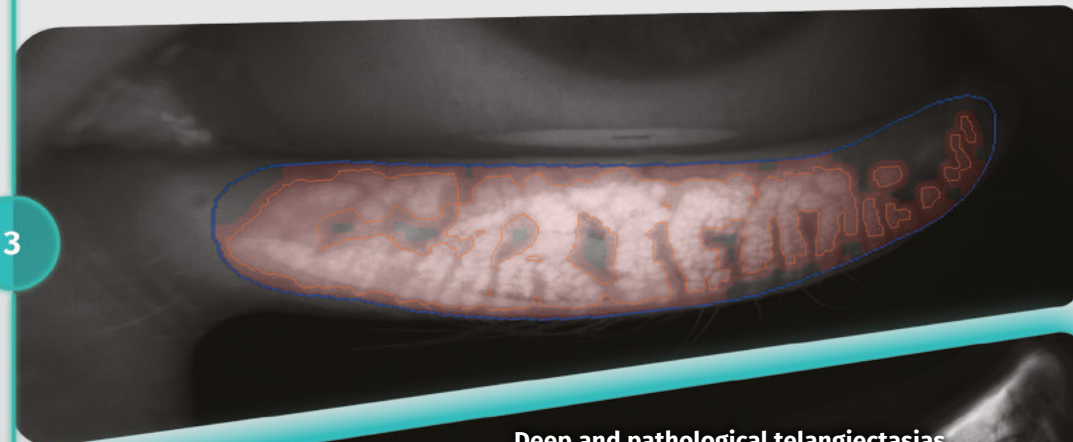
of dry eye patients



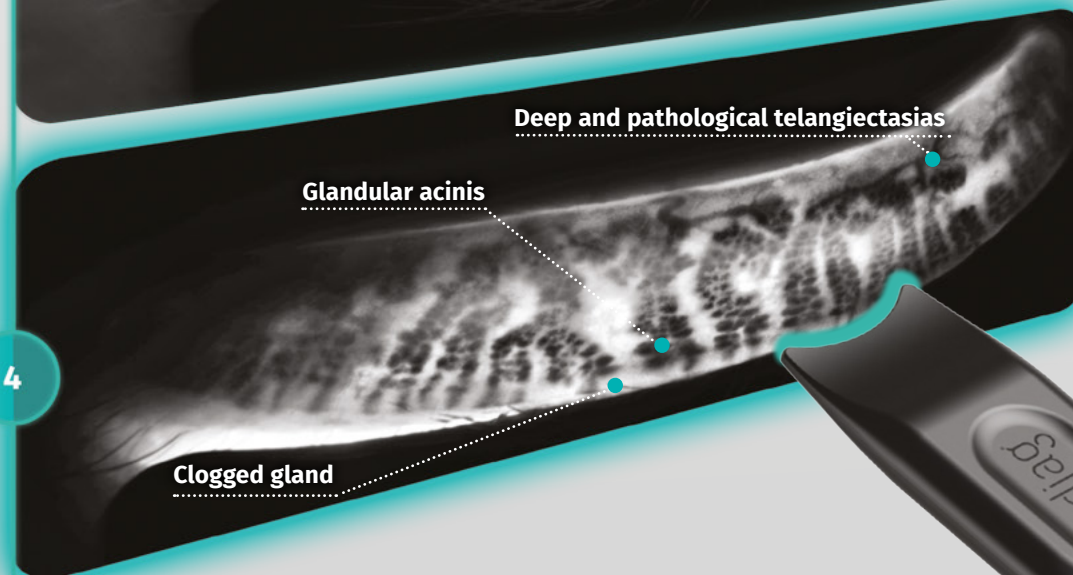
VASCULARIZATION



**GLANDS
OBSERVATION**



**GLANDS
QUANTIFICATION**

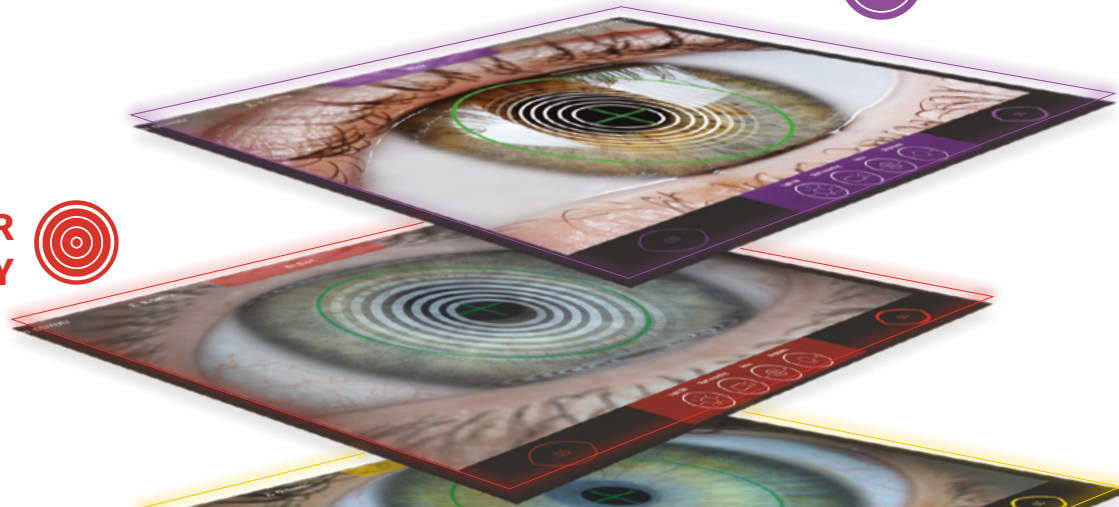


**GLANDS
FUNCTIONALITY IN
TRANSILLUMINATION**

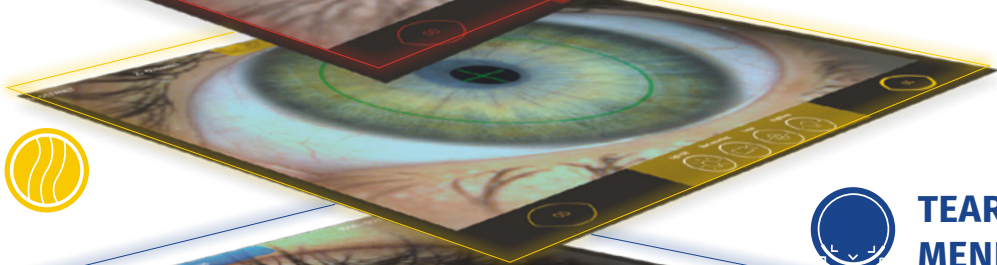
AN AIDED DIAGNOSIS INTEGRATING
ARTIFICIAL INTELLIGENCE WITH RELIABLE
ALGORITHMS, BASED ON MORE THAN
A MILLION OF IMAGES AND
VALIDATED CLINICALLY BY EXPERTS



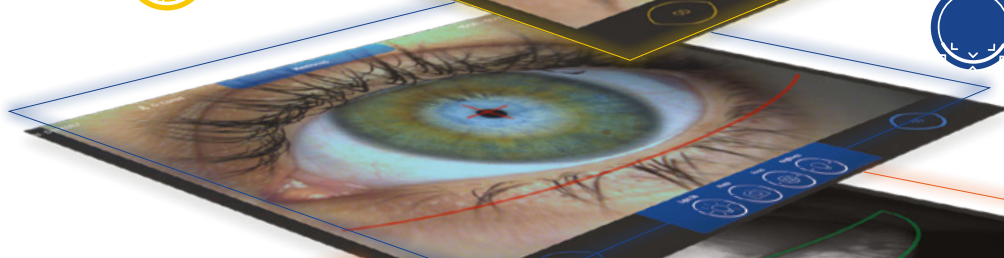
**TEAR
STABILITY** 



LIPID LAYER 



**TEAR
MENISCUS** 



**STANDARD AND
TRANSILLUMINATION
MEIBOGRAPHY** 

MORE EXAMS

Exams in **colors** and in
**fluorescein, triage and symptoms
questionnaires** (DEQ-5,
OSDI®, SPEED™), **grading scales**
(Efron, Oxford, Guillon)



**COMPLETE DIAGNOSIS
IN PRE AND POST
IPL TREATMENT**

3 CONFIGURATIONS AVAILABLE

1 STANDARD CONFIGURATION



2 CONFIGURATION WITH SCREEN FOR EXAM VISUALIZATION BY THE PATIENT

AND

3 WITH DEDICATED EXAMINATION TABLE



TECHNICAL SPECIFICATIONS

Type	Optical imaging platform for ocular surface diagnosis
Image resolution	Up to 3088 x 2076 px
Acquisition mode	Photo or video
Light source	White LED, Blue LED, Infrared LED
Yellow filter	Yes
Focus	Automatic or manual
Exams	Tear stability, Blinks, Lipid Layer, Tear meniscus, Standard Meibography and Transillumination Meibography, Fluo Stability, Generic
Questionnaires	Triage (TFOS-DEWS II™), symptoms (OSDI®, SPEED™, DEQ-5)
Grading scales	Efron, Oxford, Guillon, Pult
DICOM	Import patient worklist
Connection	4 USB ports, 1 Ethernet port, 1 HDMI port, Wifi, Bluetooth
Screen	Color touch screen 15"
Computer	1 To SSD hard disk, Windows® 10 Enterprise
Eyelid evertor	Standard Meibography and Transillumination Meibography
Temperature	15-30°C
Power supply	110/230 VAC, 50/60 Hz, 500 VA
Dimensions	Standard configuration: 500 mm (W) x 500 mm (H) x 500 mm (D) 19.68" (W) x 19.68" (H) x 19.68" (D) Configuration with secondary screen: 600 mm (W) x 500 mm (H) x 500 mm (D) 23.62" (W) x 19.68" (H) x 19.68" (D)
Weight	15 kg (33.07 lbs)
Accessories in option	Secondary screen for exam visualization by the patient (10.1"), examination table with keyboard drawer

Specifications are subject to change without notice. Non contractual pictures.
© 2024 - C.Diag® is a trademark of Quantel Medical and Lumibird Medical.
All rights reserved.

Find out more about the products in the **DRY EYE** range



0459

Manufacturers
Quantel Medical
1, rue du Bois Joli - CS40015
63808 Cournon d'Auvergne – FRANCE
Tel.: +33 (0)4 73 745 745
Email : contact@quantelmedical.fr
ISO 13485 : 2016

Headquarters
Lumibird Medical
1, rue du Bois Joli - CS40015
63808 Cournon d'Auvergne – FRANCE
Tel.: +33 (0)4 73 745 745

QUANTEL MEDICAL
A brand of



LUMIBIRD
MEDICAL